

The 1977 R&B Hit by EARTH, WIND & FIRE

Fantasy

For SATB* and Piano with Optional Instrumental Accompaniment

Duration: ca. 3:30

Arranged by
MAC HUFF

Words and Music by MAURICE WHITE,
VERDINE WHITE and EDDIE DEL BARRIO

Slowly (♩ = ca. 80) *mp*

Soprano Alto

Tenor Bass

Ah,

Piano

+ Rhodes *mp*

Em 8va Bm7 Cmaj7 Gmaj7

ah.

A (8va) B Esus E N.C. loco

f

3

*Available separately: SATB (00287585), SAB (00287586),
ShowTrax CD (00287588)

Combo parts available as a digital download (00287587)

(tpt 1-2, tsx, tbn, syn, gtr, b, dm)

halleonard.com/choral

Visit choralmusicdirect.com to purchase and download digital scores and audio mp3s.

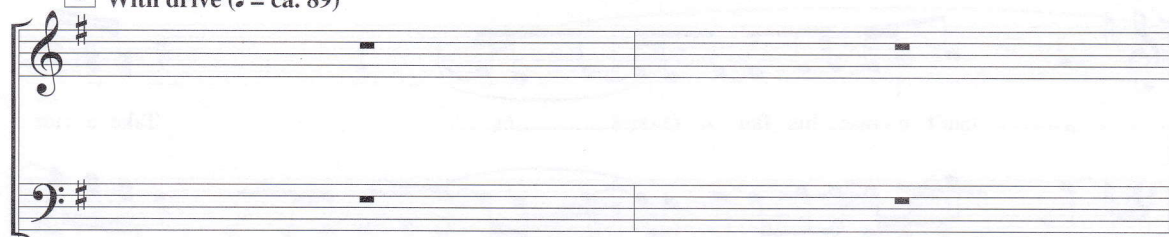
DO NOT
PHOTOCOPY



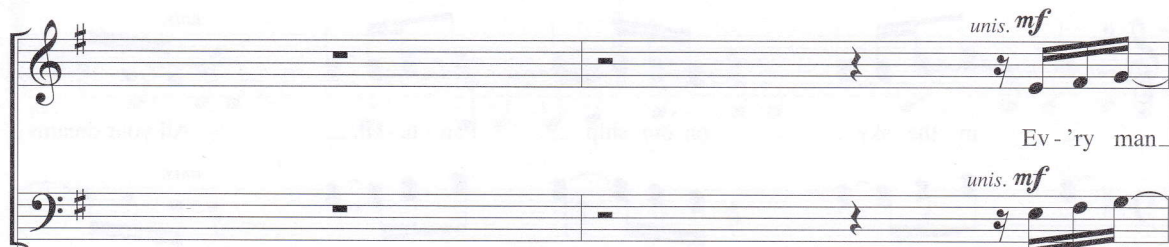
Copyright © 1977 EMI April Music Inc. and Criga Music
Copyright Renewed

This arrangement Copyright © 2019 EMI April Music Inc. and Criga Music
All Rights Administered by Sony/ATV Music Publishing LLC, 424 Church Street, Suite 1200, Nashville, TN 37219
International Copyright Secured All Rights Reserved

6 With drive (♩ = ca. 89)



With drive (♩ = ca. 89)



can't e - rase_ his fan - ta - sies. Take a ride_

C D Esus E Am7

in the sky, on our ship Fan - ta - sii. All your dreams. unis. unis.

Bm7 C D

will come true right a - way. And

Am7/C D Bsus B B7

18

we will live to - geth - er, — un -

Em7 F#m7 Gmaj7 F#m7

18 19

til the twelfth of nev - er, — our

Em7 F#m7 Gmaj7 F#m7

20 21

voic - es — will live for - ev - er — as

Em7 F#m7 Gmaj7 F#m7

22 23

one.

Bsus B N.C.

f

24

26

unis. mf

Ev-'ry thought

unis. mf

Am7

mf

28

30

— is a dream, — rush-ing by — in a stream, — bring-ing life —

Bm7

C

D

30

— to the king - dom_ of do - ing._ Take a ride_

C

D

Esus

E

Am7

32

— in the sky, — on our ship — Fan - ta - sii. — All your dreams_

unis.

unis.

Bm7

C

D

34

will come true miles a - way. — Our

Am7/C D B_{sus} B B7

36

38

voic - es — will ring to - geth - er, — un -

Em7 F#m7 Gmaj7 F#m7

38

til the twelfth of nev - er, — we

Em7 F#m7 Gmaj7 F#m7

40

all will live love_ for - ev - er_ as

42

Em7 F#m7 Gmaj7 F#m7

one. Come to

f

44

Bsus B

cresc.

see, vic-to - ry, in a land called Fan - ta - sy. Lov-ing

46

Em7 Am7 C/D Gmaj7

f

life, for you_ and me, to be - hold, to your soul is ec -

unis.

Bm7 Cmaj7 Am7 A#dim7 Bsus

48

- sta - sy. — You will find, oth - er kind, that has

You will find, oth - er kind that has

B Em7 Am7

50

been in search of you. Man-y lives has brought you to rec - og -

been in search of you. Man-y lives has brought you to,

C/D Gmaj7 Bm7 Cmaj7

52

nize it's your life, now in re - view. Oo,
 re - cog-nize it's your life, now in re - view.

Am7 A#dim7 Bsus B Bmaj7/A#

54

And as you stay for the play, fan - ta -
 sy, has in store for you. Glow-ing light will see you through. It's your

B7/A Gmaj7 Ebmaj7 D7 Gm7 Cm7

56

sy, has in store for you. Glow-ing light will see you through. It's your

Eb/F Bbmaj7 Dm7 Ebmaj7

59

Solo à la Philip Bailey

Descant

f

Oh,

day,

shin - ing day,

all your dreams come true. —

Cm7

C#dim7

Dsus

D

D7/C

61

64

As you glide,

in your stride,

with the

Bbmaj7

Ebmaj7

D7

64
Gm7

Cm7

63

ah, _____

wind as you fly — a-way. Give a smile from your lips — and say, I am

E♭/F *B♭maj7* *Dm7* *E♭maj7*

65

ah, _____

free, yes I'm free, now — I'm on — my way. —

unis. *unis.*

Cm7 *C#dim7* *Dsus* *D* *D7/C*

67

70

ah, _____

Come to see, vic - to - ry, in a

69

Bbmaj7 Ebmaj7 D7 Gm7 Cm7

ah, _____

land called Fan - ta - sy. Lov - ing life, for you and me, to be -

71

Eb/F Bbmaj7 Dm7 Ebmaj7

ah. _____

hold, to your soul is ec - sta-sy. Ah. _____

unis.

unis.

Cm7 C#dim7 Dsus D D7/C Bbmaj7 Ebmaj7 D Gm7

73

N.C.

76